

# Installation Instructions

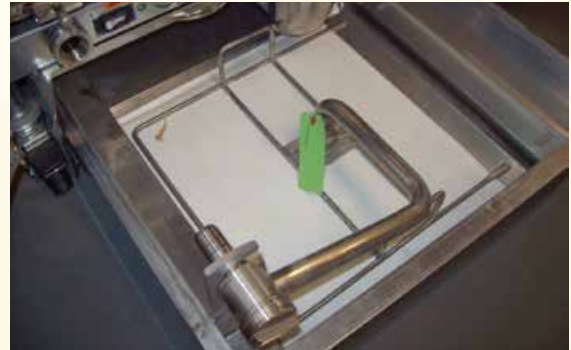
Pitco Solstice (Built-In) Filtration System

*SuperSorb<sup>®</sup>*  
*CarbonPads*

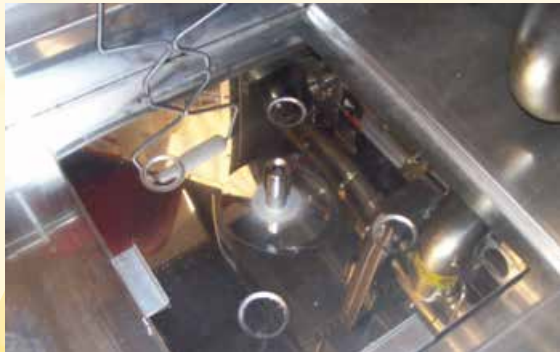
## Getting the most out of your frying program



- 1)** The Pitco Solstice Built-In Filtration System will look similar to the photo above.



- 2)** The Pitco Solstice Built-In Filter Machine needs to be adapted to use Filtercorp's Unifit Adapter Kit. In the center of the filtering pan, there is a Pitco Paper holder that must be removed. Reuse the stainless steel arm or tube (marked with a green tag in the photo above).



- 3)** After the Pitco Paper holder has been removed, insert the Filtercorp Unifit Adapter into the pan so that it sits flush on the bottom of the pan (shown above).



- 4)** Finally, connect the Pitco stainless steel arm to the Filtercorp Unifit Adapter. The Pitco Solstice Built-In Filter System is now ready to filter oil using Filtercorp SuperSorb<sup>®</sup> CarbonPads (see above).

**NOTE:** Install the CarbonPad with the smooth side against the screen, bumpy side out.



# FILTERCORP

9805 NE 116th Street  
PMB A-200  
Kirkland, WA 98034  
USA

Toll Free: (800) 473-4526  
Telephone: (425) 820-4850  
Fax: (425) 820-2816  
Web: [www.filtercorp.com](http://www.filtercorp.com)



[www.filtercorp.com](http://www.filtercorp.com)